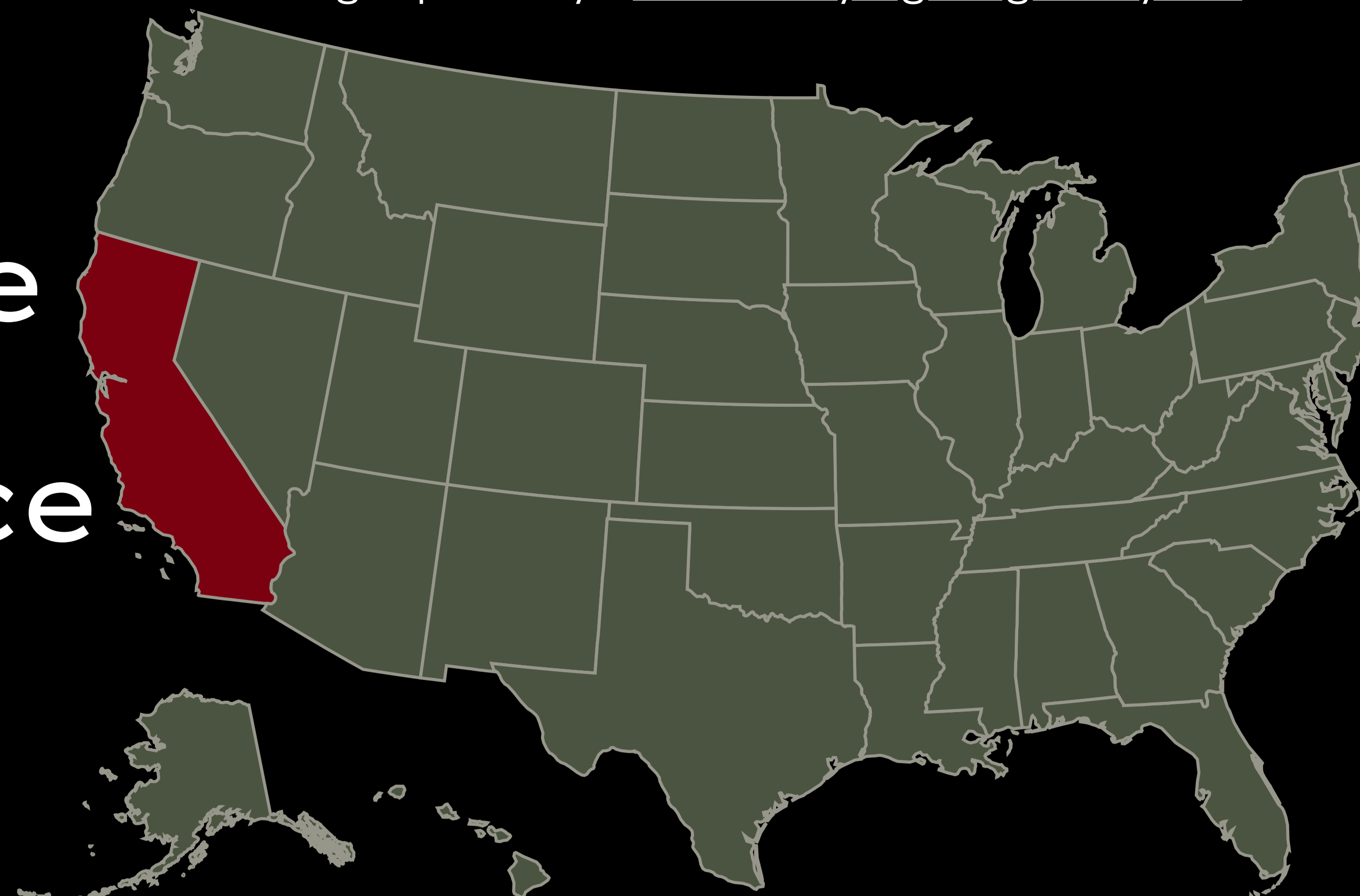
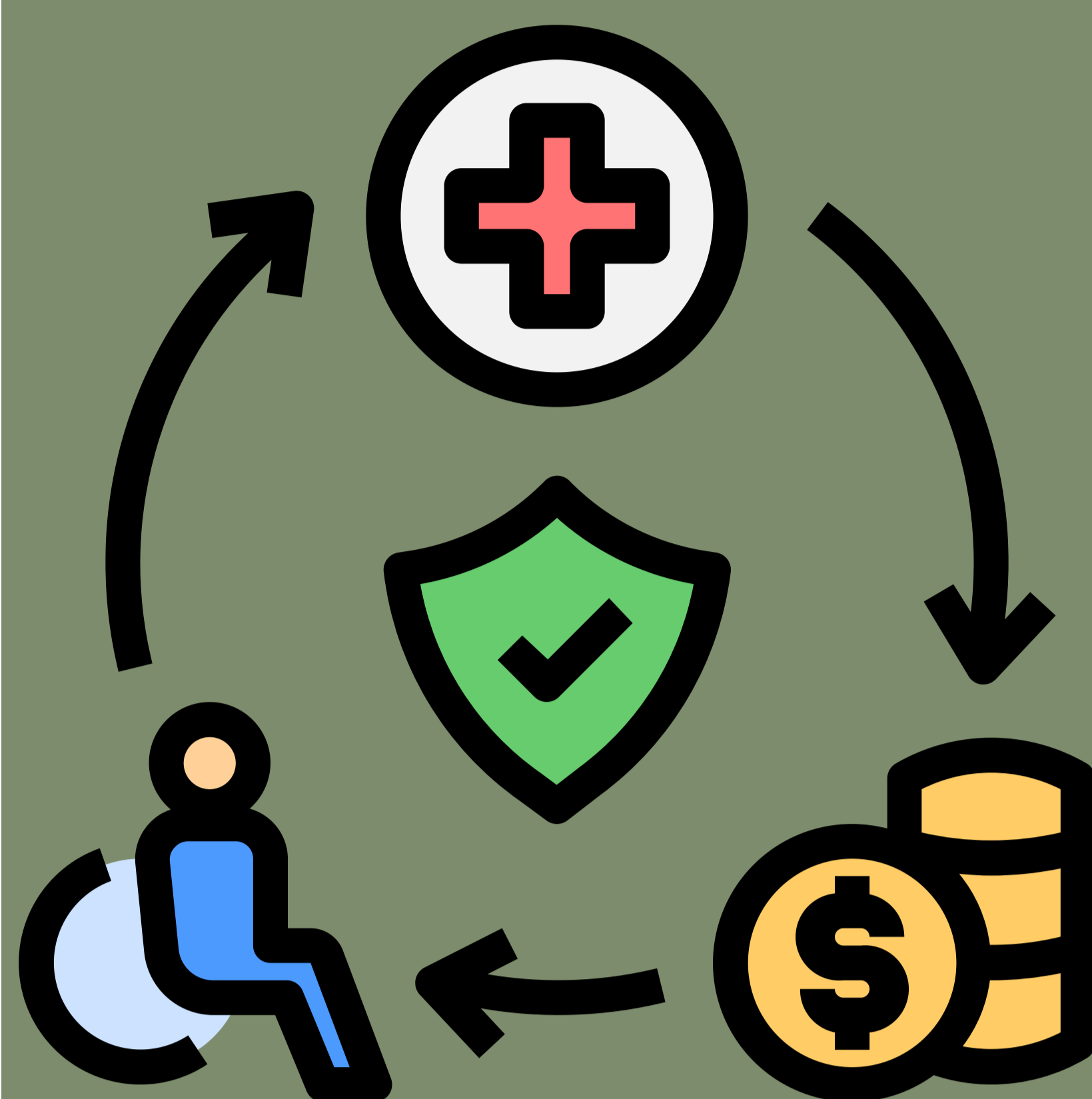


California State Disability Insurance Office



How to Claim Your Benefits from the California State Disability Insurance Office

If you are a worker in California who needs time off work due to illness, injury, pregnancy, or family care, you may be eligible for benefits from the State Disability Insurance (SDI) program. SDI is a partial wage replacement program that provides short-term Disability Insurance (DI) and Paid Family Leave (PFL) benefits to eligible workers.



Some locations for the California State Disability Insurance Offices;

Alhambra

Located at 900 S Garfield Ave, Alhambra, CA 91801.
Call them at (800) 772-1213



Anaheim

Located at 900 S Harbor Blvd, Anaheim, CA 92805.
Call them at (800) 772-1213



Antioch

Located at 2508 Verne Roberts Cir, Antioch, CA 94509.
Call them at (800) 772-1213

How to Apply for SDI Benefits

Online;

This application is faster and more convenient.

APPLY



Mail;

You need to obtain and fill out a paper claim form from the SDI office, your employer, your doctor, or the EDD website.

If you want to learn more on:

1. How Much and How Long Will You Receive SDI Benefits?
2. How to Receive Your SDI Payments?
3. How to Manage Your SDI Claim?
4. How to Contact the SDI Office?

Feel free to visit our website for more interesting and knowledgeable content like this one.

